

CERTIFICATE OF LOCATION OF GOVERNMENT CORNER

EAST QUARTER Corner of Section 29, Township 107N, Range 40W

5th Principal Meridian, State of Minnesota, County of Murray.

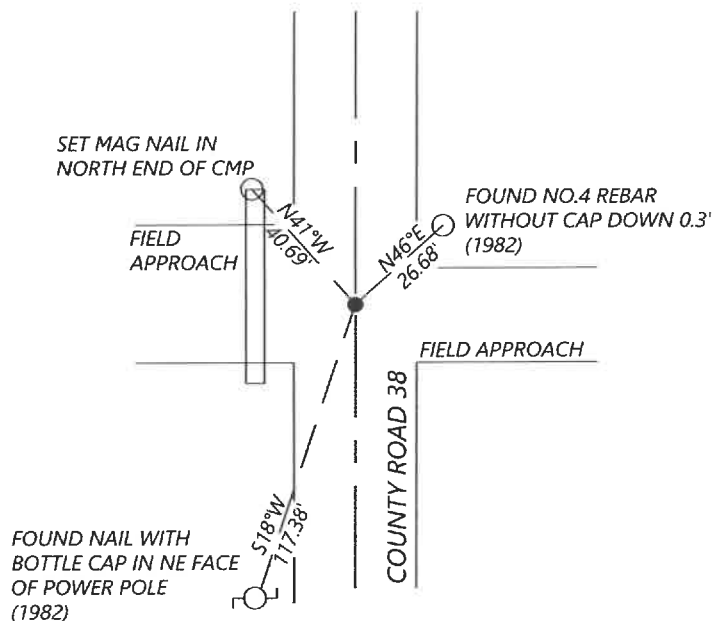
At the corner location shown on the sketch:

☒ On 10/15/2021 found a 3/4" REBAR 0.5' BELOW THE ROAD SURFACE, WITH TWO MAG NAILS ABOVE.
DATE

☒ left monument as found ☐ lowered monument ☐ removed monument (explain)

☐ On _____ placed a _____
DATE

SKETCH OF REFERENCE TIES



N.T.S.

Statement of evidence for this corner location is on back of this page.

I hereby certify that this document was researched and prepared by me or under my direct supervision and that I am a licensed Land Surveyor under the laws of the State of Minnesota.

Signature [Signature]

Date 4-18-2022 License No. 57085

Title:

☒ Land Surveyor ☐ Professional Engineer
☐ County Surveyor ☐ County Engineer

OFFICE OF THE COUNTY RECORDER

County of Murray

I hereby certify that this document was filed in the Co.

Recorder's office at _____ M. on the 22nd day of April A.D. 20 22

County Recorder Karen Brown
by _____, Deputy

DOCUMENT NO. _____

SETH WECKMAN
Minnesota License No. 57085

Statement of Evidence:

East Quarter corner of Section 29 Township 107 North, Range 40 West, 5th Principal Meridian, Murray County, Minnesota.

1861 Lewis Brockman, U.S. Deputy Surveyor, set a post in mound.

Undated Unknown, survey shows 4x4 oak stake and top part of pump head over the top of stake.

Undated Unknown, survey shows placed concrete stone.

1975 Unknown, found concrete monument 8" below surface and placed rebar above.

1982 Unknown insert from Murray County, found a concrete monument 8" below grade, placed a steel pin above monument. The following ties are shown:

Steel pin inslope NE 26.65'

N&C PP SE 47.34'

N&C PP SW 117.65'

Steel pin inslope NW 25.01'

1997 Unknown insert from Murray County, placed a P.K. nail at corner location.

2015 Unknown insert from Murray County, placed a mag nail in asphalt after 2015 overlay, 0.5ft West of the North/South road centerline. Coordinates shown are:

N 171405.732

E 527207.474

2021 Westwood Professional Services searched the area and found a mag nail on the road surface. The field crew removed the mag nail and found another mag nail, down 0.2ft. Beneath the second mag nail was a 3/4" rebar, 0.5ft below the road surface. The found monument is +/- 0.5ft West of the North/South road centerline. Found two reference ties from 1982 which match the distances shown. Accepting the found rebar as the corner position. Established one additional local reference tie.

Analysis of the recovered data, field evidence and survey measurements, indicates that the monument found is the correct perpetuation of this corner. For additional information concerning this corner please contact Westwood Professional Services.